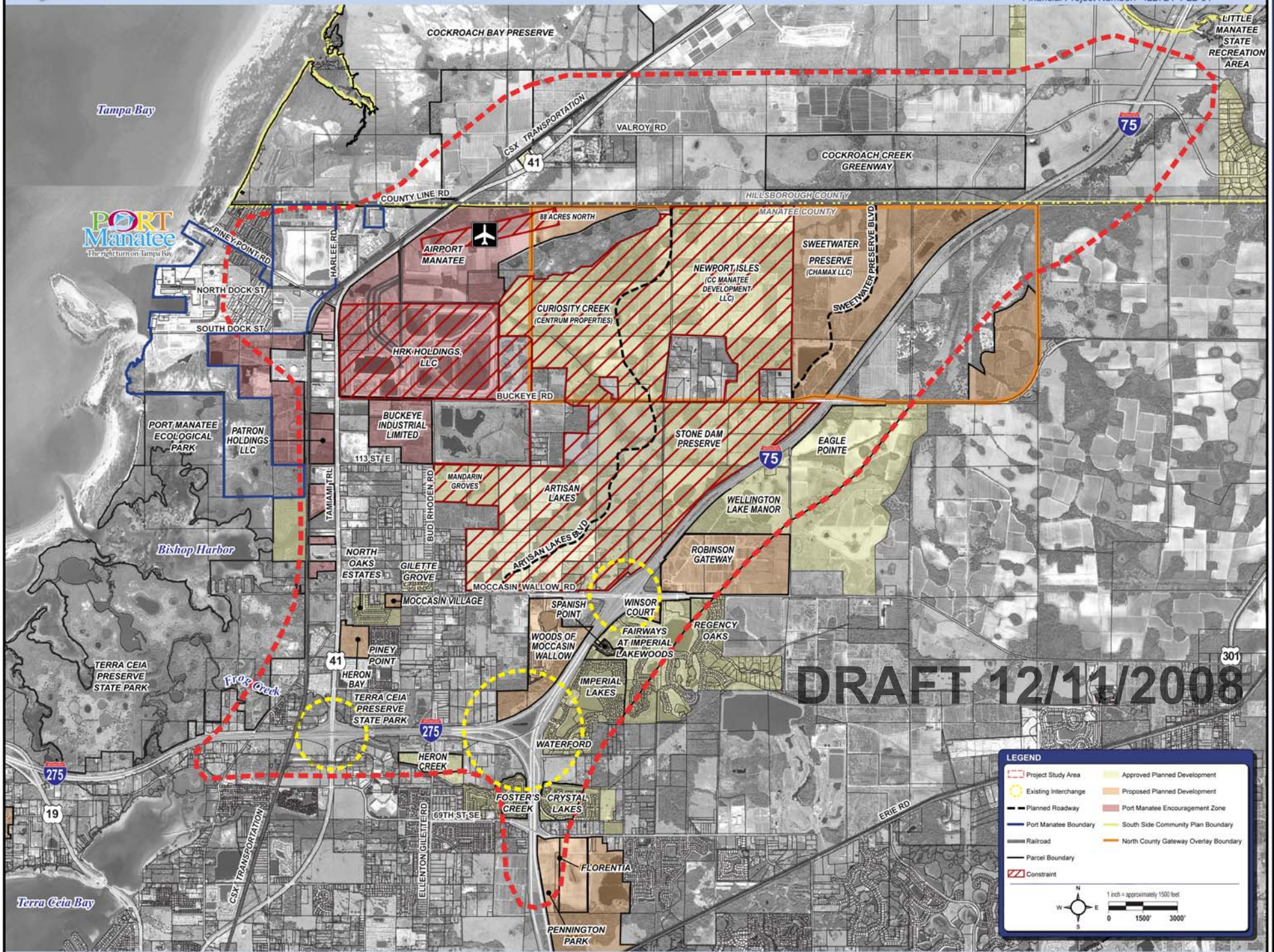


Approved and Proposed Developments

Port Manatee Connector
 PD&E STUDY
 from Port Manatee to I-75
 Manatee and Hillsborough Counties, Florida

Financial Project Number: 422724-1-22-01



DRAFT 12/11/2008

LEGEND

- Project Study Area
- Existing Interchange
- Planned Roadway
- Port Manatee Boundary
- Railroad
- Parcel Boundary
- Constraint
- Approved Planned Development
- Proposed Planned Development
- Port Manatee Encouragement Zone
- South Side Community Plan Boundary
- North County Gateway Overlay Boundary

1 inch = approximately 1500 feet

0 1500' 3000'

