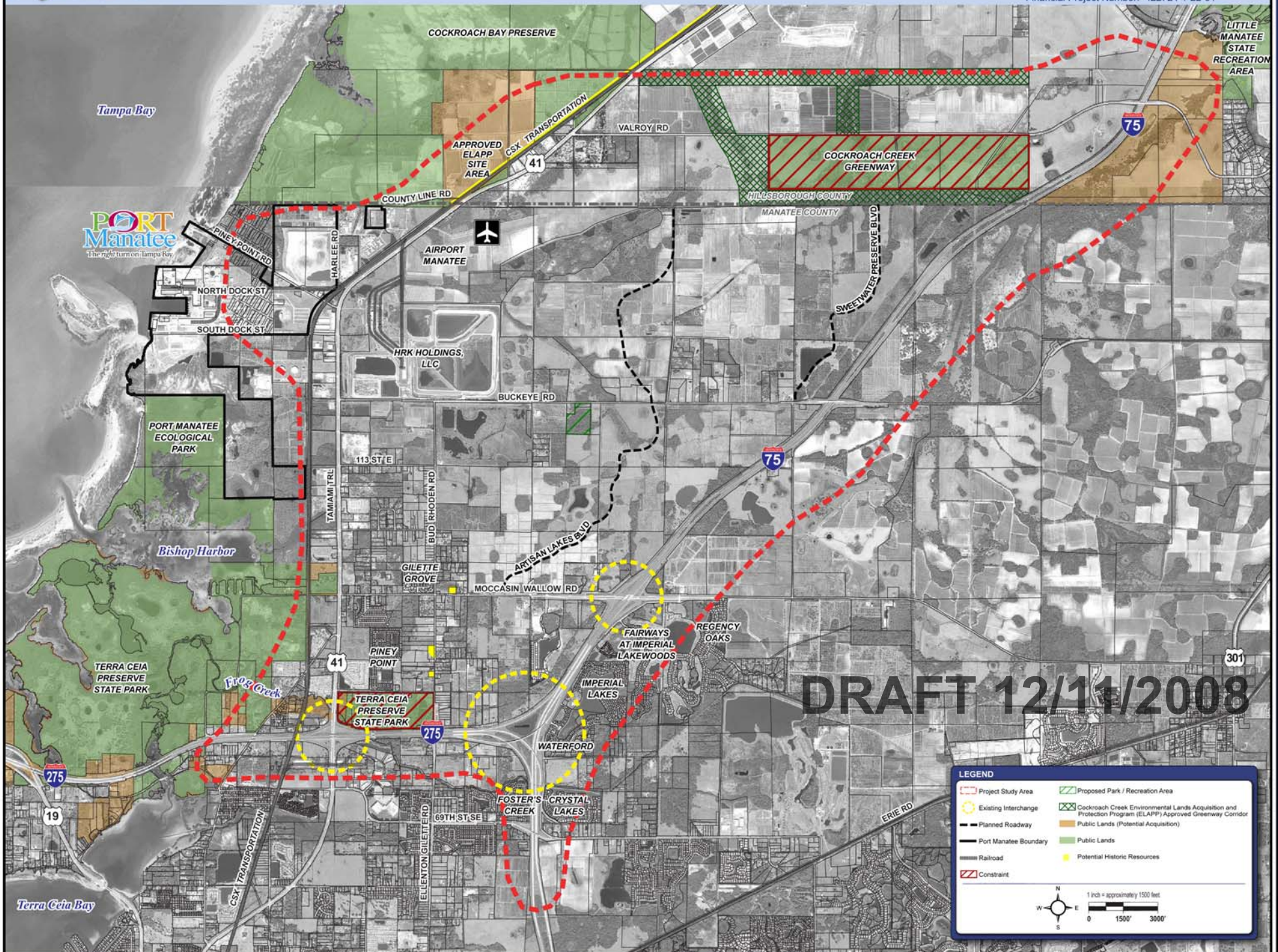


# Cultural Environment Constraints

Port Manatee Connector  
PD&E STUDY  
from Port Manatee to I-75  
Manatee and Hillsborough Counties, Florida

Financial Project Number: 422724-1-22-01



**DRAFT 12/11/2008**

**LEGEND**

- Project Study Area
- Existing Interchange
- Planned Roadway
- Port Manatee Boundary
- Railroad
- Constraint
- Proposed Park / Recreation Area
- Cockroach Creek Environmental Lands Acquisition and Protection Program (ELAPP) Approved Greenway Corridor
- Public Lands (Potential Acquisition)
- Public Lands
- Potential Historic Resources

1 inch = approximately 1500 feet  
0 1500' 3000'

